



Magnet Programs

Elementary, Middle, and High
School programs available



(443) 809-4127

Magnet@bcps.org

www.tinyurl.com/BCPSmagnet

Available inside:

Application & Admission Information

Program Descriptions

Transportation Information

School Showcase Schedule

Additional Languages

Available at

www.tinyurl.com/BCPSmagnet

2024-2025 School Year
Application Deadline:
November 3, 2023

What are Magnet Programs?

Magnet programs are theme-oriented programs that must be accessed through the magnet application process. They provide in-depth experiences and distinct choices for students with diverse interests, talents, and aptitudes. All magnet programs fulfill Baltimore County Public Schools' requirements for promotion and graduation.

Who is eligible for a magnet program placement?

Students who are eligible to attend a Baltimore County public school may apply. Students must be entering the appropriate grade level for the year of application: kindergarten-Grade 2 (elementary school programs), Grade 6 (middle school programs), or Grade 9 (high school programs). Students entering Grades 3-4 may apply to Cromwell Valley Elementary, and students entering Grades 10-11 may apply to some high school programs.

Students who are homeless are eligible to apply to a magnet program just as any other student.

Parents must submit a complete application by the deadline. High school applicants must also attend the magnet assessment for each program selected on the application.

How do I apply to magnet programs?

The application for BCPS magnet programs will be available online from the Magnet Programs' [Web site \(tinyurl.com/BCPSmagnet\)](http://tinyurl.com/BCPSmagnet) beginning at 12 noon on September 12, 2023. Applications must be submitted by 1 p.m. on November 3, 2023.

The magnet admissions process is conducted in accordance with [Superintendent's Rule 6400: Magnet Programs](#). Parents are strongly urged to review Superintendent's Rule 6400 and all application materials carefully.

Elementary and middle school applicants are selected for placement through a centralized random lottery process following priority placements. High school applicants are selected for placement following the [High School Assessment & Academic Evaluation](#) and [Admissions Processes](#). See pages 5-9 for details.

Table of Contents

Magnet Application Process	3
Magnet Showcase Events	4
High School Assessments & Academic Evaluations	5
High School Assessment Schedule	6-7
Admissions Process	8-9
Transportation	10-14
Elementary School Programs	15
Middle School Programs	16-17
High School Program Entry Levels	18
High School Programs	19-27

Magnet Application Process

STEP 1

1. Review Application and Admissions Process

- Review Magnet Application Process on this page and the [Magnet Admissions Process](#) on pages 8-9 carefully.
- Attend an Application Information Meeting.
- Obtain and read [Superintendent's Rule 6400: Magnet Programs](#).
- Kindergarten applicants - review Kindergarten Early Admission (below) and [Sibling Priority](#) (page 8) policies.
- High School applicants - review information regarding [High School Assessments & Academic Evaluation](#) (page 5).

STEP 2

2. Select Programs of Interest

- Consider student's interests, talents, and abilities while reviewing magnet program descriptions.
- Review school web sites and attend the Magnet Expo and the [school showcases](#) to learn about the magnet schools and programs of interest.
- Be aware of entry grade-level restrictions, geographic location, and transportation availability.

STEP 3

3. Apply Online

- Available from the [Magnet Programs' Web site](#) beginning at 12 noon, Tuesday, September 12, 2023, until 1 p.m. on Friday, November 3, 2023.
- Carefully read and follow ALL directions. Complete each section of the application. Only one application will be accepted for each child.
- Select up to THREE (3) programs on the application. Mark selections carefully.
- Review application to ensure it is completed correctly. ANY changes in program selection(s) MUST be made online by 1 p.m. on the application deadline, November 3, 2023.
- Print copy of application and accompanying documents, including submission confirmation email, for your records.
- High school students who attended non-BCPS schools ONLY - submit required non-BCPS report card(s) and, if applicable, documented testing accommodations.

STEP 4

4. HIGH SCHOOL APPLICANTS ONLY - Complete Assessment for Each Program Selection

- See [High School Assessments & Academic Evaluation](#) (page 5) for details.

Kindergarten Early Admission

Early Admission to Kindergarten

Kindergarten applicants who turn age 5 between September 2, 2024, and October 14, 2024, must qualify for early admission. A letter requesting early admission to Kindergarten testing must be sent to the principal of the child's zoned school at the time of application (see sample letter on right).

Parent Address
Date: ____/____/2023

Name of Principal
Zoned Elementary School
School Address

Dear (name of principal):

I am writing to request an appointment for early admission to Kindergarten testing for my child, (full name), (date of birth). I am requesting that the testing take place in January 2024, as I am also applying for my child to attend an elementary school magnet program for the 2024-2025 school year.

I look forward to hearing from you regarding my child's appointment for early admission to Kindergarten testing. I can be reached at (phone number) or (e-mail address).

Sincerely,

Parent's Signature

Learn
MORE

Magnet EXPO!*

Saturday, September 30, 2023

10 a.m. - 1 p.m.

Delta Hotel Hunt Valley

245 Shawan Road

Hunt Valley, MD 21031

Featuring 32 schools with magnet programs, ESOL and Special Education representatives, and CTE exhibits and demonstrations!

Application Information Meetings*

Tuesday, September 19, 2023

6 - 7:30 p.m.

(Milford Mill Academy)

Wednesday, September 27, 2023

6 - 7:30 p.m.

(Kenwood High School)

*Interpreting services are available upon request at no cost to participants. Please contact Magnet@bcps.org as early as possible to request.

Magnet Showcase Events

Elementary School	2023 Showcase Date	Time
The Chatsworth School	Wednesday, October 18	6 p.m.
Cromwell Valley Elementary Magnet	Thursday, October 26	6:30 p.m.
Wellwood International	Tuesday, October 24	5:30 p.m.
Woodmoor Elementary	Tuesday, October 17	6 p.m.
Middle School	2023 Showcase Date	Time
Deep Creek Middle	Wednesday, October 11	5:30 - 7 p.m.
Deer Park Middle Magnet	Wednesday, October 25	6 - 8 p.m.
Lansdowne Middle	Monday, October 30	5 - 6:30 p.m.
Loch Raven Technical Academy	Monday, October 16	5:30 - 7 p.m.
Middle River Middle	Wednesday, October 25	6 - 7:30 p.m.
New Northeast Area middle (at Golden Ring MS)	Tuesday, October 24	6 - 7:30 p.m.
Northwest Academy of Health Sciences	Tuesday, October 17	5:30 - 7 p.m.
Parkville Middle School & Center of Technology	Wednesday, October 4	6 - 8 p.m.
Southwest Academy Magnet School for Science & Engineering	Wednesday, October 12	5:30 p.m.
Stemmers Run Middle	Wednesday, October 18	5 - 7 p.m.
Sudbrook Magnet Middle	Thursday, October 26	5 - 7 p.m.
Windsor Mill Middle	Monday, October 23	5:30 - 7 p.m.
High School	2023 Showcase Date	Time
Chesapeake High School STEM Academy	Wednesday, October 11	6 p.m.
Eastern Technical High	Thursday, October 19	6 - 8 p.m.
G. W. Carver Center for Arts & Technology	Wednesday, October 18	5 - 7 p.m.
Kenwood High	Thursday, October 26 (virtual)	6 - 8 p.m.
Lansdowne High School Academy	Thursday, October 19	6 - 8 p.m.
Milford Mill Academy	Saturday, October 7	10 a.m. - 12 p.m.
New Town High	Thursday, October 19	5 - 7 p.m.
Overlea High	Thursday, October 12	5:30 - 7:30 p.m.
Parkville High School & Center for Mathematics, Science, & Computer Science	Tuesday, October 10	6 p.m.
Patapsco High School & Center for the Arts	Monday, October 30	6 p.m.
Randallstown High	Wednesday, October 11	6 p.m.
Sollers Point Technical High	Monday, October 23	5 - 7 p.m.
Sparrows Point High	Wednesday, October 25	6 - 8 p.m.
Towson High	Tuesday, October 17	6 p.m.
Western School of Technology & Environmental Science	Thursday, October 12	6 - 8 p.m.
Woodlawn High	Tuesday, October 24	6 p.m.

High School Assessments & Academic Evaluation

Scheduling Assessments

High school magnet programs require parents to schedule an assessment appointment for their student. See [assessment schedule](#) (page 6-7) for dates and times. Appointments must be scheduled by no later than Wednesday, November 8, 2023. Failure to attend and complete an assessment will disqualify the applicant for that magnet program.

Preparing for Assessments

Most assessments are specific to each magnet program, vary in testing/performance formats, and may require prior preparation. It is the responsibility of the parent to obtain the [Assessment Guidelines](#) for each program selection and to ensure the applicant prepares for and attends the assessment on the published date. Assessment Guidelines are available on the Magnet Programs' [Web site \(tinyurl.com/BCPSmagnet\)](http://tinyurl.com/BCPSmagnet). Assessment formats are subject to change.

Testing Accommodations

Applicants who have accommodations as part of a documented educational plan (IEP, 504, EL, etc.) will be provided with the appropriate required accommodations during the assessment(s). Non-BCPS education plans should be submitted with the magnet application.

Unforeseen Illness/Emergency

If the applicant cannot attend or complete the scheduled assessment due to an unforeseen illness or emergency, the applicant must contact the school immediately. Assessments will not be rescheduled without documentation verifying the illness or emergency.

Inclement Weather

If school activities are cancelled due to inclement weather, magnet assessments will be postponed. Postponed assessments will occur on the designated inclement weather date (see [High School Assessment Schedule](#) page 6-7). All emergency closing and cancellation information will be posted on the [BCPS website](http://www.bcps.org) (www.bcps.org).



Academic Evaluation

Academic grades, current mathematics enrollment, and attendance may be reviewed. Students are awarded points for meeting established standards. Review the [Assessment Guidelines](#) for each program.

Academic grade averages are calculated using the letter grades reported by the school(s) the student attended. There is no weighting or special consideration given to grades received in gifted and talented classes, trimester grades, or grades that are calculated by means other than those used by Baltimore County Public Schools.

Non-BCPS Report Cards

Applicants to high school magnet programs who received grade reports from a non-BCPS school for any portion of the 2022-2023 school year or the first quarter/trimester of the 2023-2024 school year must submit a copy of the report card(s) to BCPS Magnet Programs (magnet@bcps.org).

Report cards for 2022-2023 must be submitted with the magnet application by November 3, 2023. Report cards for 2023-2024 must be submitted by December 8, 2023, to BCPS Magnet Programs (magnet@bcps.org).

High School Placements

In order to be included in the lottery, students must complete any required magnet assessments and submit any required non-BCPS report cards. For more information about placements, please see [Admission Process \(page 8-9\)](#).



High School Assessment Schedule

School	Assessment Dates & Times			Assessment Information
Chesapeake High School STEM Academy 1801 Turkey Point Road Essex 21221 (443) 809-0100 Students zoned to attend Chesapeake High School do not need to apply or attend the assessment.	Tuesday, December 12, 2023 5 p.m. Arts, Multimedia & Communications, Business & Information Technology, Leadership & Humanities (Inclement Weather Date: December 19, 2023)	Thursday, December 14, 2023 5 p.m. Science, Engineering & Mathematics (Inclement Weather Date: December 21, 2023)	On-site Registration: 15 min. prior to assessment appointment See Assessment Guidelines for specific information.	
Eastern Technical High School 1100 Mace Avenue Essex 21221 (443) 809-0190	Tuesday, January 9, 2024 4 p.m. All programs except Culinary Arts (Inclement Weather Date: January 16, 2024)	Thursday, January 11, 2024 4 p.m. All programs except Culinary Arts (Inclement Weather Date: January 18, 2024)	On-site Registration: 3 p.m. See Assessment Guidelines for specific information.	
George Washington Carver Center for Arts & Technology 938 York Road Towson 21204 (443) 809-2793	Saturday, December 9, 2023 8 a.m. - 6 p.m. Cosmetology, Design & Production, IT & Interactive Media Production, Vocal Music (Inclement Weather Date: December 16, 2023)	Saturday, January 13, 2024 8 a.m. - 6 p.m. Acting, Building & Construction, Digital Instrumental Music, Visual Arts (Inclement Weather Date: January 20, 2024)	On-site Registration: 15 min. prior to assessment appointment See Assessment Guidelines for specific information.	
Kenwood High School 501 Stemmers Run Road Essex 21221 IB - (443) 809-6384 SSA - (443) 809-0318	Friday, December 1 @ 8 a.m. - Friday, December 8, 2023 @ 8 a.m. <i>Virtual Assessment</i> International Baccalaureate, Sports Science Academy			See Assessment Guidelines for specific information
Lansdowne High School Academy 3800 Hollins Ferry Road Lansdowne 21227 (443) 809-1415 Students zoned to attend Lansdowne High School do not need to apply or attend assessment.	Tuesday, December 12, 2023 5 - 7 p.m. Arts & Communication (Inclement Weather Date: December 19, 2023)	Wednesday, December 13, 2023 5- 7 p.m. Health & Human Services, Science (Inclement Weather Date: December 20, 2023)	On-site Registration: 10 min. prior to assessment appointment See Assessment Guidelines for specific information.	
Milford Mill Academy 3800 Washington Avenue Windsor Mill 21244 (443) 809-0660	Friday, December 15, 2023 5 - 8 p.m. Cosmetology (Inclement Weather Date: December 20, 2023)	Saturday, December 16, 2023 8 a.m. - 12 p.m. Automotive Service, Building & Construction (Inclement Weather Date: December 20, 2023)	Saturday, January 20, 2024 8 a.m. - 12 p.m. Acting, Instrumental Music, Design & Production, Visual Art, Vocal Music (Inclement Weather Date: January 25, 2024, 5 - 8 p.m.)	On-site Registration: 15 min. prior to assessment appointment See Assessment Guidelines for specific information.
New Town High School 4931 New Town Boulevard Owings Mills 21117 (443) 809-1614 Students zoned to attend New Town High School do not need to apply.	Thursday, December 14, 2023 5 - 7 p.m. (Inclement Weather Date: January 19, 2023)			On-site Registration: 15 min. prior to assessment appointment See Assessment Guidelines for specific information.
Overlea High School 5401 Kenwood Avenue Overlea 21206 (443) 809-5241 Students zoned to attend Overlea High School do not need to apply.	Thursday, January 4, 2024 5 - 7 p.m. (Inclement Weather Date: January 11, 2024)			On-site Registration: 15 min. prior to assessment appointment See Assessment Guidelines for specific information.
Parkville High School 2600 Putty Hill Avenue Parkville 21234 (443) 809-5257 ext. 262	Wednesday, January 3, 2024 4:30 p.m. (Inclement Weather Date: January 17, 2024)			On-site Registration: 30 min. prior to assessment appointment See Assessment Guidelines for specific information.

Assessments will ONLY be rescheduled with documentation of unforeseen illness or emergency.

Assessment format subject to change.

See [assessment guidelines](#) for updated information.

High School Assessment Schedule

School	Assessment Dates & Times		Assessment Information
Patapsco High School & Center for the Arts 8100 Wise Avenue Dundalk 21222 (443) 809-7127	Saturday, January 6, 2024 8 a.m. - 6 p.m. (Inclement Weather Date: January 13, 2024)		On-site Registration: 10 min. prior to assessment appointment See Assessment Guidelines for specific information.
Randallstown High School 4000 Offutt Road Randallstown 21133 (443) 809-0748	Monday, January 8, 2024 5 - 7 p.m. Multimedia Communications (Inclement Weather Date: January 16, 2024)	Thursday, January 11, 2024 5 - 7 p.m. Academy of Health Professions (Inclement Weather Date: January 16, 2024)	On-site Registration: 30 min. prior to assessment appointment See Assessment Guidelines for specific information.
Sollers Point High School 1901 Delvale Avenue Dundalk 21222 (443) 809-7075	Monday, January 8, 2024 5 - 7 p.m. Academy of Health Professions, Biomedical Science, IT-Artificial Intelligence, IT-Networking (Inclement Weather Date: January 16, 2024)	Wednesday, January 10, 2024 5 - 7 p.m. Automotive Service Technology, Diesel Truck/Power Systems, Building Construction Technology, Cosmetology (Inclement Weather Date: January 17, 2024)	On-site Registration: 30 min. prior to assessment appointment See Assessment Guidelines for specific information.
Sparrows Point High School 7400 North Point Road Sparrows Point 21219 (410) 507-0028	Saturday, December 2, 2023 8 a.m. - 12 p.m. (Inclement Weather Date: Dec. 6 @ 4 - 8 p.m.)	Saturday, December 9, 2023 8 a.m. - 12 p.m. (Inclement Weather Date: Dec. 13 @ 4 - 8 p.m.)	On-site Registration: 15 min. prior to assessment appointment See Assessment Guidelines for specific information.
Towson High School 69 Cedar Avenue Towson 21286 (443) 809-3608	Saturday, December 2, 2023 8 a.m. - 12 p.m. (Inclement Weather Date: January 6, 2024)		On-site Registration: 15 min. prior to assessment appointment See Assessment Guidelines for specific information.
Western School of Technology & Environmental Science 100 Kenwood Avenue Catonsville 21228 (443) 809-0840	Tuesday, January 23, 2024 4 - 8:30 p.m. All programs except Culinary (Inclement Weather Date: January 30, 2024)	Thursday, January 25, 2024 4 - 8:30 p.m. All programs except Culinary (Inclement Weather Date: January 30, 2024)	On-site Registration: 30 min. prior to assessment appointment See Assessment Guidelines for specific information.
Woodlawn High School 1801 Woodlawn Drive Woodlawn 21207 (443) 809-1309	Tuesday, January 9, 2024 6 - 8 p.m. Engineering (PLTW) (Inclement Weather Date: January 24, 2024)	Wednesday, January 10, 2024 6 - 8 p.m. Early College (Inclement Weather Date: January 24, 2024)	On-site Registration: 30 min. prior to assessment appointment See Assessment Guidelines for specific information.
Centralized Assessments			
Centralized Assessments: Dance, Culinary Arts, Literary Arts BCPS has implemented a centralized assessment process for Dance, Culinary Arts, and Literary Arts. A student applying to one of these programs at two or three schools only needs to complete the assessment one time. The results from that assessment will be applied to each school where that program was selected on the application.	Culinary Arts/Baking & Pastry <i>Sollers Point Technical High</i> 1901 Delvale Avenue Dundalk 21222 Saturday, January 27, 2024 8 a.m. - 5 p.m. (Inclement Weather Date: February 3, 2024) On-site Registration: 30 min. prior to assessment appointment	Literary Arts <i>Loch Raven Tech. Acad.</i> 8101 LaSalle Road Towson 21286 Saturday, December 9, 2023 8 a.m. (Inclement Weather Date: Dec. 11, 2023 @ 4:30 p.m.) On-site Registration: 30 min. prior to assessment appointment	Dance <i>Carver Center</i> 938 York Road Towson 21204 Saturday, January 6, 2024 8 a.m. - 5 p.m. Saturday, January 13, 2024 8 a.m. - 5 p.m. (Inclement Weather Date: January 20, 2024) On-site Registration: 30 min. prior to assessment appointment

Inclement Weather

In the event that school activities are cancelled due to inclement weather, magnet assessments will be postponed. Postponed assessments will occur on the designated inclement weather date. All emergency closing and cancellation information will be posted on the BCPS automated information line, (443) 809-5555. Closings and cancellation announcements will also be made through local media.

Admissions Process

Priority Placements

Child of an Employee – When an employee's primary work site is a school with a magnet program and the employee's child applies to a magnet program in that school, the child will be given priority placement in the magnet program as follows:

- For elementary and middle school magnet programs, the child must be an eligible applicant.
- For high school magnet programs, the child must be an eligible applicant and earn an evaluation score of 80% or higher.

Sibling Priority Placement -

Kindergarten applicants who have an older sibling who is currently enrolled in and who will continue to attend the same magnet program for which admission is being sought receive priority placement for that program. Sibling priority is not provided for any other conditions.

High School Program Priority Placement - Up to 20% of the available seats will first be filled by applicants with a total evaluation score of 80% or higher and who earn the highest scores on the magnet assessment(s).

Lottery Process

If there are fewer applicants than seats available for a magnet program, all eligible applicants are offered placement.

If there are more applicants than seats available for a magnet program, placements are made through a random lottery selection process following priority placements. A random lottery is conducted by school and grade for each magnet program.

Applicants who either did not complete the application or assessment process are disqualified and not entered into the lottery process.

Elementary and Middle School magnet programs – If the number of applicants exceeds the number of seats available, seats are first filled with priority placements and then a random lottery is conducted to fill all remaining seats and to generate a waitlist.

High School magnet programs – If the number of applicants exceeds the number of seats available, seats are first filled with priority placements. Next, a random lottery of applicants who earn a total evaluation score of 80% or higher will be conducted to fill available seats and to generate a waitlist. Finally, a random lottery will be conducted in order of descending total evaluation scores (79%, 78%, 77%, etc.) to fill available seats and generate a waitlist.



Admissions Process

Notification

All applicants receive email notification of their admissions status from BCPS Magnet Programs.

Magnet admission decisions for elementary and middle school applicants will be released by February 9, 2024 (date subject to change).

Magnet admission decisions for high school applicants will be released by March 8, 2024 (date subject to change).

Parents must accept or decline the seat offer electronically by the identified deadline or the offer will be revoked.

Once initial seat offers have been accepted or declined, available seats will be offered to students on the program's waitlist.

Parents receiving placement offers from the waitlist have three (3) business days to respond. Failure to respond will result in forfeiture of the seat, and the placement will be offered to the next student on the waitlist.

Decision Release Dates

Elementary & Middle School
February 9, 2024
(date subject to change)

High School
March 8, 2024
(date subject to change)



Waitlists

Only students who applied by the application deadline and meet the qualification requirements for a magnet program can be placed on a waitlist. When there are more applicants for a magnet program than there are seats to accommodate them, a random lottery selection process is used to fill the available seats and create a waitlist for the program. Placement on the waitlist means, as a result of the random lottery process, the child was not selected for initial placement. If a student who was offered admission declines the placement, the unfilled seat can then be offered to students on the waitlist. Waitlists are maintained until the close of business on the last day of the first quarter of the school year for which admission is sought.

Applicants placed on a waitlist will receive a waitlist number. The waitlist number indicates the child's position on the waitlist. Unfilled seats are offered to students in ascending order of the waitlist number, starting with the student who has waitlist number 1.

The Waitlist Status for all programs is posted on the BCPS Magnet Programs' [Web site](#) beginning in mid-April. The posted waitlist will identify the next waitlist number to be contacted if a program seat becomes available, as well as the next scheduled update.

Elementary School Transportation

The Chatsworth School

222 New Avenue

Reisterstown 21136 • (443) 809-1103

Transportation is provided for students who are zoned to attend Cedarmere, Franklin, Glyndon, Owings Mills, Reisterstown, or Timber Grove elementary schools.

Cromwell Valley Elementary Magnet School

825 Providence Road

Towson 21286 • (443) 809-4888

Transportation is provided for students who are zoned to attend Halstead Academy, Hampton, Oakleigh, Pleasant Plains, Rodgers Forge, Stoneleigh, Villa Cresta, or West Towson elementary schools.



Transportation disclaimer

Baltimore County Public Schools provides transportation to and from elementary school magnet programs for students who reside within the established transportation zone of the magnet program. Transportation is provided from a limited number of pick-up points located at designated school sites. Parents are responsible for providing transportation for their students to and from their designated pick-up point.

NOTE: Pick-up points do not fall under the same guidelines as regular bus stops with regard to distance and walking conditions. In addition, supervision is not provided by the school system at the pick-up points.

Transportation is not provided by Baltimore County Public Schools outside of the established transportation zone of a magnet program.

Wellwood International School

2901 Smith Avenue

Pikesville 21208 • (443) 809-1212

Transportation is provided for students who are zoned to attend Bedford, Fort Garrison, Milbrook, Summit Park, Wellwood, or Winand elementary schools.

Woodmoor Elementary School

3200 Elba Drive

Gwynn Oak, 21207 • (443) 809-1318

Transportation is provided for students who are zoned to attend Arbutus, Baltimore Highlands, Bedford, Catonsville, Chadwick, Church Lane, Deer Park, Dogwood, Edmondson Heights, Featherbed Lane, Halethorpe, Hebbville, Hernwood, Hillcrest, Johnnycake, Lansdowne, Lyons Mill, Milbrook, New Town, Powhatan, Randallstown, Relay, Riverview, Scotts Branch, Westchester, Westowne, Winand, Winfield, Woodbridge, Woodmoor, or Woodholme elementary schools.

A hand-drawn poster with a green border. At the top, a banner reads "DIVERSITY". Below it is a drawing of a tree with a thick trunk and many thin branches. Under the tree is a globe surrounded by a ring of small, diverse human figures. To the right of the globe, the text "Everyone MATTERS" is written in large, bold letters. Above the globe, there are two lines of text: "you are Different and thats okay." and "we are all Different in our own way." At the bottom right, there are two small circular drawings of groups of people.

National Magnet Schools Month - February 2023

BCPS Magnet Poster Contest

Alexandra G., Grade 5

Cromwell Valley Elementary Magnet

Middle School Transportation

Deep Creek Middle School

1000 S. Marlyn Avenue, 21221
Essex 21221 • (443) 809-0112

Transportation is provided for students zoned to attend Deep Creek, General John Stricker, Holabird, or Stemmers Run middle schools.

Deer Park Middle Magnet School

9830 Winands Road
Randallstown 21133 • (443) 809-0726

Transportation is provided for students zoned to attend either Deer Park or Franklin middle schools.



new Northeast Area Middle School

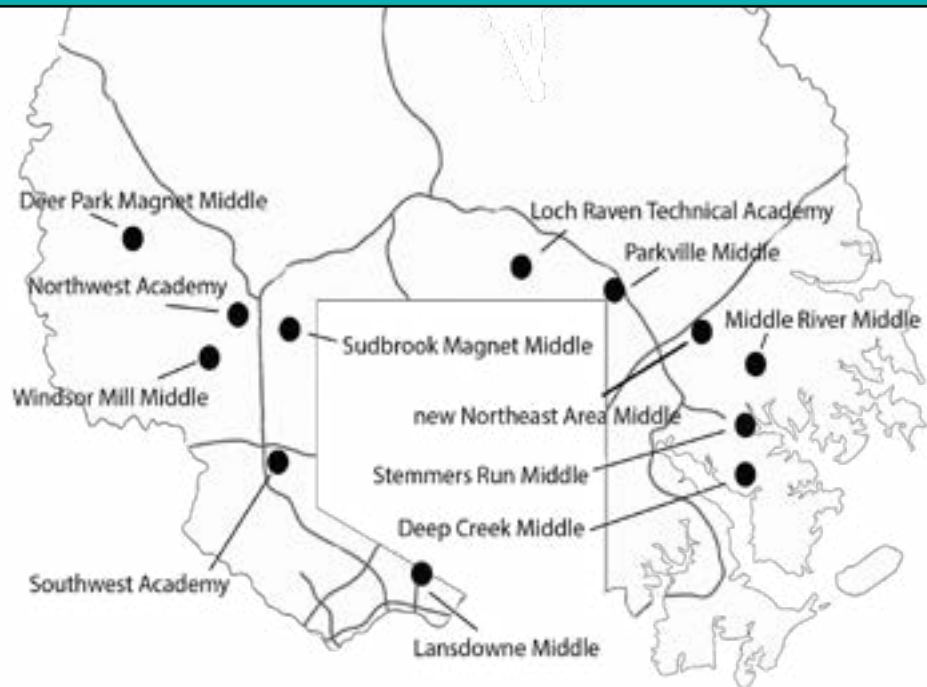
5210 King Avenue
Rosedale 21237

Transportation is provided for students zoned to attend Deep Creek, Dundalk, General John Stricker, Holabird, Middle River, new Northeast Area, Perry Hall, Sparrows Point, or Stemmers Run middle schools.

Lansdowne Middle School

2400 Lansdowne Road
Halethorpe 21227 • (443) 809-1411

Transportation is provided for students zoned to attend Arbutus, Catonsville, Lansdowne, or Woodlawn middle schools.



Loch Raven Technical Academy

8101 LaSalle Road
Towson 21286 • (443) 809-3518

Transportation is provided for students zoned to attend Cockeysville, Dumbarton, Hereford, Loch Raven, Perry Hall, Pine Grove, or Ridgely middle schools.

Middle River Middle School

800 Middle River Road
Middle River 21220 • (443) 809-0165

Transportation is provided for students zoned to attend Deep Creek, Dundalk, General John Stricker, Holabird, Middle River, new Northeast Area, Perry Hall, Sparrows Point, or Stemmers Run middle schools.

Northwest Academy of Health Sciences

4627 Old Court Road
Pikesville 21208 • (443) 809-0742

Transportation is provided for students zoned to attend Arbutus, Catonsville, Deer Park, Lansdowne, Northwest Academy, Pikesville, Southwest Academy, Windsor Mill, or Woodlawn middle schools.



Middle School Transportation

Parkville Middle School & Center of Technology

8711 Avondale Road

Parkville 21234 • (443) 809-5250

Transportation is provided for students zoned to attend Deep Creek, Dundalk, General John Stricker, Holabird, Middle River, new Northeast Area, Parkville, Sparrows Point, or Stemmers Run middle schools.

Southwest Academy Magnet School for Science & Engineering

6200 Johnnycake Road

Gwynn Oak 21207 • (443) 809-0825

Transportation is provided for students zoned to attend either Lansdowne Middle School or Southwest Academy.

Stemmers Run Middle School

201 Stemmers Run Road

Essex 21221 • (443) 809-0177

Transportation is provided for students zoned to attend Deep Creek, Dundalk, General John Stricker, Holabird, Middle River, new Northeast Area, Perry Hall, Sparrows Point, or Stemmers Run middle schools.

Sudbrook Magnet Middle School

4300 Bedford Road

Pikesville 21208 • (443) 809-6720

Transportation is provided for students zoned to attend Arbutus, Catonsville, Deer Park, Franklin, Lansdowne, Northwest Academy, Pikesville, Southwest Academy, Windsor Mill, or Woodlawn middle schools.

Windsor Mill Middle School

8300 Windsor Mill Road

Windsor Mill 21244 • (443) 809-0618

Transportation is provided for students zoned to attend Arbutus, Catonsville, Deer Park, Lansdowne, new Northwest Academy, Southwest Academy, Windsor Mill, or Woodlawn middle schools.



National Magnet Schools Month - February 2023

BCPS Magnet Poster Contest

Carmen C., Grade 8

Loch Raven Technical Academy



Transportation disclaimer

Baltimore County Public Schools provides transportation to and from middle school magnet programs for students who reside within the established transportation zone of the magnet program. Transportation is provided from a limited number of pick-up points located at designated school sites. Parents are responsible for providing transportation for their students to and from their designated pick-up point.

NOTE: Pick-up points do not fall under the same guidelines as regular bus stops with regard to distance and walking conditions. In addition, supervision is not provided by the school system at the pick-up points.

Transportation is not provided by Baltimore County Public Schools outside of the established transportation zone of a magnet program.

High School Transportation

Chesapeake High School STEM Academy

1801 Turkey Point Road
Essex 21221 • (443) 809-0100

Transportation is provided for students who are zoned to attend Chesapeake, Dundalk, Kenwood, Overlea, or Patapsco high schools.

Eastern Technical High School

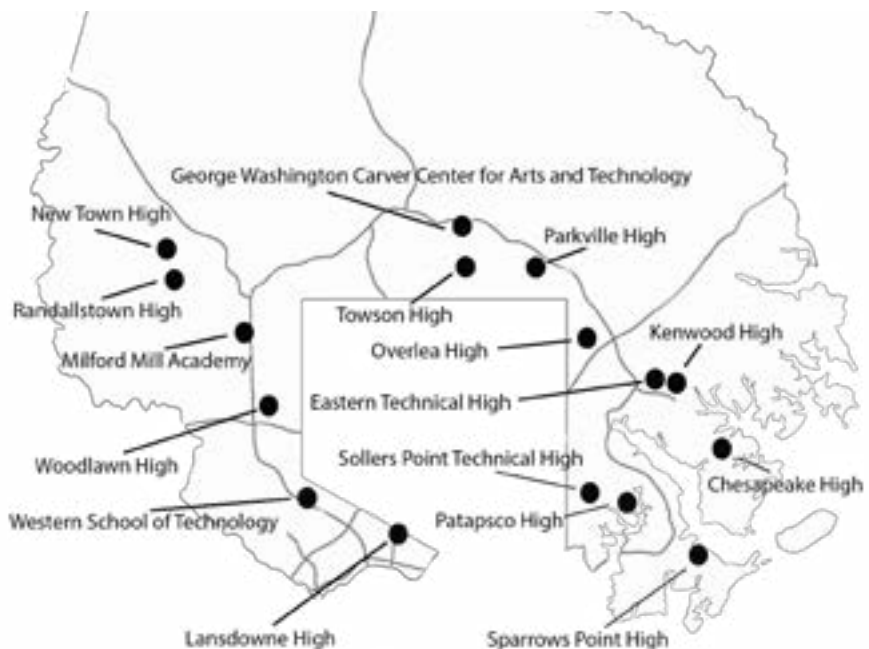
1100 Mace Avenue
Essex 21221 • (443) 809-0190

Transportation is provided for students who are zoned to attend Chesapeake, Kenwood, Overlea, Perry Hall, or Parkville high schools.

George Washington Carver Center for Arts & Technology

938 York Road
Towson 21204 • (443) 809-2793

Transportation is provided for students from all areas of the Baltimore County Public Schools.



Kenwood High School

501 Stemmers Run Road
Essex 21221
IB - (443) 809-6384
SSA - (443) 809-0318

Transportation to the Sports Science Academy is provided for students from all areas of the Baltimore County Public Schools. Transportation to the IB program is provided for students who are zoned to attend Chesapeake, Dundalk, Kenwood, Loch Raven, Overlea, Parkville, Patapsco, Perry Hall, and Sparrows Point high schools.

New Town High School

4931 New Town Boulevard
Owings Mills 21117 • (443) 809-1614

Transportation is provided for students who are zoned to attend Catonsville, Franklin, Lansdowne, Milford Mill, New Town, Randallstown, or Woodlawn high schools.

Overlea High School

5401 Kenwood Avenue
Overlea 21206 • (443) 809-5241

Transportation is provided for students who are zoned to attend Chesapeake, Dundalk, Kenwood, Overlea, Parkville, Patapsco, Perry Hall, and Sparrows Point high schools.

Lansdowne High School Academy

3800 Hollins Ferry Road
Lansdowne 21227 • (443) 809-1415

Transportation is provided for students who are zoned to attend Catonsville, Franklin, Lansdowne, Milford Mill, New Town, Owings Mills, Pikesville, Randallstown, and Woodlawn high schools.

Milford Mill Academy

3800 Washington Avenue
Windsor Mill 21244 • (443) 809-0660

Transportation is provided for students who are zoned to attend Catonsville, Franklin, Lansdowne, Milford Mill, New Town, Owings Mills, Pikesville, Randallstown, and Woodlawn high schools.



High School Transportation

Parkville High School & Center for Mathematics, Science, & Computer Science

2600 Putty Hill Avenue
Parkville 21234 • (443) 809-5257
x262

Transportation is provided for students who are zoned to attend Chesapeake, Dundalk, Kenwood, Loch Raven, Overlea, Parkville, Patapsco, Perry Hall, and Sparrows Point high schools.

Patapsco High School & Center for the Arts

8100 Wise Avenue
Dundalk 21222 • (443) 809-7127

Transportation is provided for students who are zoned to attend Chesapeake, Dundalk, Kenwood, Loch Raven, Overlea, Parkville, Patapsco, Perry Hall, and Sparrows Point high schools.

Randallstown High School

4000 Offutt Road
Randallstown 21133 • (443) 809-0748

Transportation is provided for students who are zoned to attend Franklin, Milford Mill, Owings Mills, New Town, Randallstown, or Woodlawn high schools.



Sollers Point Technical High School

1901 Delvale Avenue
Dundalk 21222 • (443) 809-7075

Sollers Point students attend Sollers Point half-day and their zoned school half-day. Before, after, and mid-day transportation is provided for students who will also attend Chesapeake, Dundalk, Kenwood, Overlea, Patapsco, or Sparrows Point high schools.

Sparrows Point High School

7400 North Point Road
Sparrows Point 21219 • (410) 507-0028

Transportation is provided for students who are zoned to attend Chesapeake, Dundalk, Kenwood, Overlea, Parkville, Patapsco, Perry Hall, and Sparrows Point high schools.

Towson High School

69 Cedar Avenue
Towson 21286 • (443) 809-3608

Transportation is provided for students from all areas of the Baltimore County Public Schools. Students transfer buses at George Washington Carver Center for Arts and Technology.

Western School of Technology & Environmental Science

100 Kenwood Avenue
Catonsville 21228 • (443) 809-0840

Transportation is provided for students who are zoned offer

Woodlawn High School

1801 Woodlawn Drive
Gwynn Oak 21207 • (443) 809-1309

Transportation is provided for students who are zoned to attend Catonsville, Franklin, Lansdowne, Milford Mill, New Town, Owings Mills, Pikesville, Randallstown, and Woodlawn high schools.

Transportation disclaimer

Baltimore County Public Schools provides transportation to and from high school magnet programs for students who reside within the established transportation zone of the magnet program. Transportation is provided from a limited number of pick-up points located at designated school sites. Parents are responsible for providing transportation for their students to and from their designated pick-up point.

NOTE: Pick-up points do not fall under the same guidelines as regular bus stops with regard to distance and walking conditions. In addition, supervision is not provided by the school system at the pick-up points.

Transportation is not provided by Baltimore County Public Schools outside of the established transportation zone of a magnet program.

Elementary School Programs

International Baccalaureate Primary Years Programme (IB PYP)

Wellwood International (Entry Levels Grades K-2)

Woodmoor Elementary (Entry Levels Grades K-2)

As part of the internationally recognized IB Primary Years Programme, students increase awareness of diverse cultures and become more internationally minded through the rigorous inquiry-based study of six transdisciplinary themes. These themes are embedded in all content areas and universally applied to all cultures, encouraging students to make sense of the world around them through first-hand experiences. Students engage in action projects that enhance their global awareness, as well as participate in communicative development of the French language at Wellwood International and the Spanish language at Woodmoor Elementary.



Science, Technology, Engineering, Art and Math (S.T.E.A.M.)

The Chatsworth School (Entry Levels Grades K-2)

Cromwell Valley Elementary (Entry Levels Grades K-4)

Students develop 21st century skills including communication, collaboration, critical thinking, and creativity in a rigorous program of learning that integrates BCPS' curriculum, S.T.E.A.M. (science, technology, engineering, arts, and mathematics), and computer science. In an engaging, hands-on, project-based environment, students develop a well-rounded understanding of the world through a multi-disciplinary approach focused on innovation and problem solving. Students are empowered to become producers of information as they write code, implement the Engineering Design Process, and persevere to solve complex problems.



Middle School Programs Entry Level Grade 6 only



Career and Professional Studies **Lansdowne**

Students apply classroom concepts to real world situations related to different career paths and areas of study, establish short- and long-term career goals, explore college options, and develop financial literacy. Students have the opportunity to visit local businesses and government agencies and experience hands-on, project-based learning activities. They also explore high school, college, and career choices through guest speakers and independent research.

Exploratory **Parkville**

Students explore applied engineering, environmental engineering (SEAS), mass communications, and visual/graphic arts in practical applications. Students participate in all areas during their first year and choose two pathways of study in Grade 7 and one pathway in Grade 8. The engineering-related pathways incorporate pre-engineering curricula and Next Generation Science Standards.

Health Sciences **new Northeast Area & Northwest Academy**

Students are introduced to the field of health sciences in a rigorous academic program that includes authentic experiences through health care provider partnerships and intensive classroom instruction. Students receive a solid foundation in the general function and organization of the healthcare field as well as the study of the human body and its structure, functions, and systems. This program prepares students for success in high school health sciences programs. Program content may vary at each location.

International Baccalaureate Middle Years Programme (IB MYP) **Middle River, Stemmers Run & Windsor Mill**

As part of the internationally recognized IB MYP, students engage in an interdisciplinary global framework across all content areas to become more active, internationally minded learners. The IB framework empowers students to explore a wide range of local, national and global issues, enhancing their ability to be creative, critical, and reflective thinkers. An integral part of an IB education is the acquisition of a second language and service to the local and global community.



Law & Finance **Loch Raven**

Students explore a wide variety of topics and problem-based learning activities in economic literacy and the legal system in the 21st century. The program prepares students for success in high school finance, law, and related career and technical programs.

Mass Communications **Deer Park**

Students are provided with instruction in the use of communication technology, including television and radio broadcasting, video production, desktop publishing, and Web design.



Middle School Programs Entry Level Grade 6 only



Performing Arts Exploration Loch Raven

Students are provided with a variety of opportunities that include steel pan percussion and theatre (incorporating drama, movement, and song). Students are prepared for individual and ensemble performances and are required to perform for a variety of audiences.

Performing Arts Deer Park & Sudbrook

Students may participate in:
Dance
Instrumental Music (Band or Strings)*
Vocal Music
Theatre Arts

Students are prepared for individual and ensemble performances and are required to perform for a variety of audiences. Students may earn high school Fine Arts graduation credit by passing the Theatre Arts final exam. *Instrumental Music (Band/Strings) does not include the study of guitar or piano. Applicants should have one or more years of prior experience playing an instrument.



Science, Technology, Engineering & Math (STEM)

Deep Creek, Deer Park, Loch Raven, Southwest, & Sudbrook

Using an innovative STEM curriculum, students engage in science, technology, engineering, and mathematics through real-world, problem-based activities. Hands-on projects based on authentic situations in STEM careers help students discover their passions and explore pathways to a promising future.

Visual Arts

Loch Raven, Deer Park, & Sudbrook

Students explore the many facets of the world of art as they develop skills in drawing, painting, sculpting, printmaking, digital media, and ceramics. Program content may vary at each location.

World Languages

Deer Park & Sudbrook

Students increase language skills and fluency while learning about the cultural aspects of the language of study. Deer Park offers Spanish. Sudbrook offers French, Japanese, and Spanish.



High School Program Entry Levels

Chesapeake High School

Academy of Arts, Multimedia & Communications – 9
Academy of Business & Information Technology – 9
Academy of Leadership & Humanities – 9
Academy of Science, Engineering & Mathematics – 9

Eastern Technical High School

Academy of Health Professions – 9
Building & Construction Technology – 9-10
Culinary Arts – 9-10
Engineering Careers – 9
Environmental Technology – 9
IT-Networking (Cyber Security) – 9
Interactive Media Production – 9
Law & Public Policy – 9-10
Teacher Academy of Maryland – 9

G.W. Carver Center for Arts & Technology

Acting – 9-11
Building and Construction Technology – 9-10
Cosmetology – 9-10
Culinary Arts – 9-10
Dance – 9-11
Design & Production – 9-11
Digital Instrumental Music – 9-11
IT-Artificial Intelligence & Interactive Media Production – 9
Literary Arts – 9-11
Visual Arts – 9-11
Vocal Music – 9-11

Kenwood High School

International Baccalaureate DP – 9-10
Sports Science Academy – 9-10

Lansdowne High School

Academy of Arts & Communications (Dance, Instrumental Music, Mass Communications, Theatre, Visual Arts, Vocal Music) – 9-10
Academy of Health & Human Services – 9-10
Academy of Science – 9-10

Milford Mill Academy

Acting – 9-10
Automotive Service Technology – 9-10
Building & Construction Technology – 9-10
Cosmetology – 9-10
Dance – 9-10
Design & Production – 9-10
Instrumental Music (Band, Strings) – 9-10
Literary Arts – 9-10
Visual Arts – 9-10
Vocal Music – 9-10

New Town High School

International Baccalaureate (CP, DP) – 9

Overlea High School

Health Sciences – 9-10

Parkville High School

Computer Science – 9
Engineering (PLTW) – 9
Interactive Media Production – 9
IT-Networking (Cyber Security) – 9
Teacher Academy of Maryland – 9

Patapsco High School & Center for the Arts

Acting – 9-11
Dance – 9-11
Design & Production – 9-11
Instrumental Music (Band, Strings) – 9-11
Literary Arts – 9-11
Visual Arts – 9-10
Vocal Music – 9-11

Randallstown High School

Academy of Health Professions – 9
Multimedia Communications (TV Production/Journalism, Visual Communications) – 9-10

Sollers Point Technical High School

Note: These are half-day programs ONLY. Sollers students attend half-day at their zoned school and half-day at Sollers.

Academy of Health Professions – 9-10
Automotive Service Technology – 9-10
Baking & Pastry – 9-10
Biomedical Sciences (PLTW) – 9
Building and Construction Technology – 9-10
Cosmetology – 9-10
Culinary Arts – 9-10
Diesel Truck & Power Systems – 9-10
IT-Artificial Intelligence – 9-10
IT-Networking (Cyber Security) – 9-10

Sparrows Point High School

Environmental Studies – 9-10

Towson High School

Law & Public Policy – 9

Western School of Technology & Environmental Science

Academy of Health Professions – 9
Automotive Service Technology – 9
Cosmetology – 9
Culinary Arts – 9
Environmental Science – 9
Environmental Technology – 9
Graphic/Print Communications – 9
IT-Artificial Intelligence – 9
IT-Networking (Cyber Security) – 9
Mechanical Construction/Plumbing Careers – 9
Sports Science Academy – 9

Woodlawn High School

Early College – 9
Engineering (PLTW) – 9-10

High School Programs

Academy of Arts & Communication Lansdowne

- offers specialized pathways in:

Dance – addresses aesthetic education, dance composition, dance history, repertory, choreography, creative expression, production, performance, criticism, and connections between dance and healthy living. Ballet, jazz, modern, and student choreography are emphasized.

Instrumental Music – allows students to develop individual talents and skills in ensemble performance, sight-reading, and music theory. Students are prepared for conducting and solo performances in advanced settings and are exposed to composing and recording technology.

Mass Communications – provides students with opportunities to acquire and develop skills in TV broadcasting, multimedia, and/or journalism. Students may take courses to gain proficiency in graphic design, digital rendering, animation, Web design, and desktop publishing; work in an on-site TV studio set; and apply classroom experience in practical applications in journalism and photo journalism.

Theatre Arts – allows students to work in a variety of performance settings, showcase their talents, and work behind the scenes with sound, lighting, set and costume design and construction, and theatre management.

Visual Arts – allows students to develop skills in studio art, photography, 3D design, and multimedia. Students may choose to concentrate on one or more of these art forms through advanced level courses and independent studies. Studio art includes the study of art history, drawing, painting and printmaking. Photography includes darkroom and digital approaches, as well as the history and professional applications of photography. 3D design includes ceramic sculpture and exploration of alternative mediums through independent studies.

Vocal Music – provides students with a strong choral and ensemble focus, as well as all styles of solo performances such as classical, musical theatre, folk, world music, contemporary, and popular music. Students study vocal fundamentals and technique, sight reading, opera/musical theatre, acting, movement, history, and criticism and may also work with music technology, recording, and engineering.



Academy of Arts, Multimedia & Communications Chesapeake

- offers specialized pathways in:

Fine Arts– provides opportunities for students to develop 2-dimensional and 3-dimensional works through a variety of traditional, non-traditional, and digital mediums. Courses, such as photography, clay, and AP studio are designed to develop design thinking, personal voice, and media techniques.

Interactive Media Production *† - provides students with experiences in Web site development, internet technology, computer graphics, digital media and entertainment production, and project management. Students develop skills in photo/video imagery, animation, non-linear video editing, Web page design, basic game development, and mobile/handheld application development. Students complete a professional portfolio which can be used to apply for advanced/continuing education programs and employment. Students may also earn industry certification in Adobe® Creative Suite® and Web design.

Journalism/Communications – provides students with a strong foundation in journalism and public speaking, with opportunities for in-depth study of broadcast journalism, technical writing, media broadcasting and editing, advertising, film analysis, public relations, and desktop publishing.

Career and Technical Education Completer Programs (CTE)

CTE completer programs provide students with BOTH relevant career skills preparation AND rigorous academic skills.

A completer program is a sequence of courses in a specific career pathway that provides a minimum of three to four credits in a CTE program (not individual elective courses). All completer programs are approved by the Maryland State Department of Education (MSDE), and completion of the required CTE completer credits meets MSDE graduation requirements at the high school level.

Students who successfully complete a CTE program in most career pathways are eligible for articulated community college credit. (Some CTE programs offer as many as 21 articulated [FREE] college credits!)

Students who wish to follow a CTE career completer program may pursue career paths at their comprehensive high schools or may apply to one of the magnet career and technical programs offered by Baltimore County Public Schools.

For information about CTE programs in comprehensive schools, please contact the Office of Career and Technical Education at (443) 809-8921 or visit their [Web site \(tinyurl.com/CTEducation\)](http://tinyurl.com/CTEducation).

High School Programs

Academy of Business & Information Technology * **Chesapeake**

- offers specialized pathways in:

Business Management ‡ – provides opportunities for students to manage and supervise activities related to the organization of a business. Students develop and implement a business plan and learn to provide effective and efficient management of business operations.

Marketing ‡ – provides opportunities for students to strategize business activities related to selling, customer support services, and public relations. Students analyze customer markets, determine product mix, pricing, promotion, distribution, and learn public relations strategies.

Information Technology–Computer Science ‡

– allows students to design, develop, and test software solutions and develop expertise in project management and programming languages, as well as introductory computer science.



Academy of Health & Human Services Lansdowne

- offers specialized pathways in:

Leadership

Army JROTC – motivates young people to be better citizens. The program is not an army recruitment program. Students share in the vision of quality citizenship, character, and leadership as they progress through the curriculum and develop partnerships with the community and educational institutions.

Teacher Academy of Maryland*‡ --

-prepares students for a variety of careers in the education profession. The program consists of four high school credits that focus on teaching as a profession, human growth and development, learning theory, and curriculum and instruction. In their senior year, students demonstrating proficiency have the opportunity to participate in internships in elementary, middle, or high school settings. Students who agree to teach in the state of Maryland may qualify for the Hope Scholarship, offered to college students.

Technical Careers

Carpentry Careers or Electrical Careers *‡

- provides instruction and experiences related to residential and commercial applications. Students may participate in job shadowing, internships, and school-to-work programs. Students successfully completing the program are eligible for placement in the Associated Builders and Contractors' (ABC) Apprentice Program.

Nutrition and Food Science (ProStart) ‡

–prepares students for careers and postsecondary study in the areas of dietetics, food science and nutrition, and food service in commercial and/or institutional settings. Students explore careers related to the preparation and service of food and the planning of healthy diets. Scientific principles are applied to the study of food selection, production, preparation, and processing. Computer technology and applications are a vital component of this program.

* This program is also available as an IB Career-related Programme at New Town High.



Academy of Health Professions *‡ **Eastern, Overlea, Randallstown, Sollers Point, & Western**

- provides students with project and problem-based learning, clinical and internship experiences, and classroom and lab instruction related to the field of healthcare. Students are introduced to healthcare knowledge and skills through two foundation courses: Foundations of Medicine and Health Science and Structure and Functions of the Human Body. Students may then choose from several course combinations to complete the four-course sequence. Students may participate in a supervised clinical experience course, have the opportunity to design and participate in an internship, and/or enroll in a pre-requisite course at the local community college. Depending upon location, students may have the opportunity to apply what they are learning to real-life healthcare situations in a medical specialty course, such as Certified Clinical Medical Assistant, Certified Nursing Assistant, Pharmacy Technician, Dental Assistant, or Physical Rehabilitation, and may earn state and/or nationally recognized credentials after passing licensure examinations. Course offerings, internship opportunities and articulated college credit may vary at program locations. To access the AHP programs at Overlea, students must apply to Overlea's Health Sciences program.

** Articulated college credit may be earned from the Community College of Baltimore County.*

‡ Students may earn a minimum of 3 or 4 MSDE Career & Technical Education (CTE) credits for graduation, depending upon site.

□ Transcribed credit may be earned from Stevenson University, Community College of Baltimore County, and various out-of-state universities.

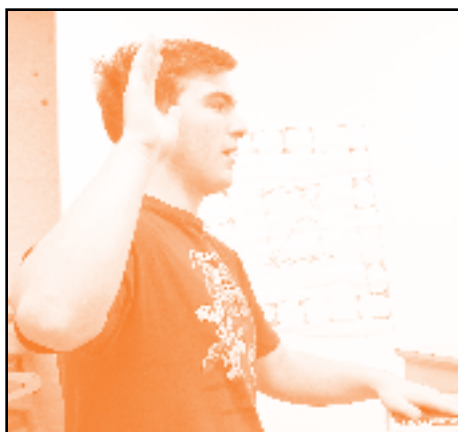
High School Programs

Academy of Leadership & Humanities Chesapeake

- offers specialized pathway in:

Homeland Security-Criminal Justice

*‡ – prepares students to apply technical information and broad knowledge in the growing field of criminal justice for entry-level positions and continued education. Students develop specific skills in communication, human relations, criminal law, and criminalistics.



Academy of Science Lansdowne

- offers specialized pathway in:

Project Lead The Way (PLTW)

Biomedical Sciences ‡ □

- offers an intense focus on the concepts of human medicine and biomedical innovations through an introduction to physiology, genetics, microbiology, and public health. PLTW courses are structured so students acquire strong teamwork and communication skills. Students develop organizational, critical-thinking, and problem-solving skills as they investigate various health conditions and infectious diseases, examine the interactions of human body systems, and explore how to prevent and fight infection. Students in the program may participate in an internship, clinical experience, or conduct independent research in the biomedical sciences field.

Academy of Science, Engineering & Mathematics Chesapeake

- offers specialized pathways in:

Project Lead The Way Engineering/ Aerospace Science *‡

– provides students with the opportunity to develop thinking skills as they design and build solutions to authentic engineering problems. Students analyze, evaluate, and produce models of project solutions and digital circuitry using industry-standard computer software. Students apply scientific and engineering concepts to design materials and processes that directly measure, repair, improve, and extend systems in different environments. (Successful completion of Grade 8 Algebra I is strongly recommended for the Engineering Pathway.)

Environmental Science – provides opportunities for students to investigate the scientific principles, concepts, and methodologies required to understand the interrelationships of the natural world, identify both natural and human-made environmental problems, analyze the relative risks associated with these problems, and examine alternative solutions for resolving and/or preventing them.

Mathematics – provides opportunities for students to develop a pure understanding of the connections between Algebra and Calculus as they learn mathematics through the use of technology and explore careers in the field.



High School Programs



Acting

Carver Center, Milford Mill & Patapsco
(also offered as a Lansdowne Academy of Arts & Communications pathway as Theatre Arts)

– allows students to work in a variety of performance settings, including traditional and black box theatres. Guest artists enhance student experiences and allow for individual talent development in drama, comedy, and musical theatre. Several performances throughout the year allow students to showcase their talents to a wide audience. Previous experience, though not expert level, is expected for applicants. Program content and available resources may vary at each location.

Automotive Service Technology *‡ **Milford Mill, Sollers Point, & Western**

- introduces students to automotive service and repair. Students perform selected skilled services outlined in National Automotive Technician's Education Foundation (NATEF) requirements using specialized tools and equipment on late-model vehicles. Students learn Automotive Service Excellence (ASE) certified skills through computerized content instruction, shop demonstrations, diagnostic testing, and hands-on activities performed on shop vehicles.

Biomedical Sciences (Project Lead The Way) ‡ □

Sollers Point

(also offered as a Lansdowne Academy of Science pathway; and as a New Town IB Career-related Programme)

- offers an intense focus on the concepts of human medicine and biomedical innovations through an introduction to physiology, genetics, microbiology and public health. PLTW courses are structured so students acquire strong teamwork and communication skills. Students develop organizational, critical-thinking, and problem-solving skills as they investigate various health conditions and infectious diseases, examine the interactions of human body systems, and explore how to prevent and fight infection. Students in the program may participate in an internship, clinical experience, or conduct independent research in the biomedical sciences field.

Building & Construction Technology *‡ **Carver Center, Eastern, Milford Mill, & Sollers Point**

- provides students with knowledge and principles of carpentry, plumbing, electrical, and HVAC systems. This hybrid construction program involves the construction of modular units, with a high degree of completion of interior elements, and presents the construction side of the manufactured construction industry. Additional curriculum modules, covering project management and project supervision as it relates to all areas of Construction Trades, are offered as supplemental resources. Students who successfully complete the program are eligible for certification through National Craft Assessment and Certification (NCCER) and Occupational Safety and Health Administration (OSHA).

Cosmetology ‡

Carver Center, Milford Mill, Sollers Point & Western

- provides students with the information and skills to perform services on the hair, skin, and nails, as well as skills in professional development, communication and marketing. A required 1,500 hours of course instruction qualifies the student to take the State of Maryland Cosmetology license exams. Taking the state exam is a graduation requirement to become a Cosmetology program completer.



* Articulated college credit may be earned from the Community College of Baltimore County.

‡ Students may earn a minimum of 3 or 4 MSDE Career & Technical Education (CTE) credits for graduation, depending upon site.

□ Transcribed credit may be earned from Stevenson University, Community College of Baltimore County, and various out-of-state universities.

High School Programs



Culinary Arts *†

Culinary Arts

Carver Center, Eastern, Sollers Point, & Western

- provides students with instruction in basic food and bakeshop production, nutrition, management training, service skills, human relations, and menu development, utilizing the ProStart program developed by the National Restaurant Association Education Foundation. Students who successfully complete the sanitation course will qualify to take the ServSafe examination for national certification.

Baking and Pastry

Sollers Point

- provides students with instruction in advanced bakery production of breads and desserts, basic food and bakeshop production, service skills, and human relations, utilizing the American Culinary Federation (ACF) guidelines. Students who successfully complete the sanitation course will qualify to take the ServSafe examination for national certification.

Dance

Carver Center, Milford Mill & Patapsco

(also offered as a Lansdowne Academy of Arts & Communication pathway)

- emphasizes rigorous training in ballet and modern techniques, as well as jazz, tap, and musical theatre. Students develop skills through experiences in aesthetic education, dance composition, labanotation, repertory, choreography, creative expression, production, performance, criticism, and connections between dance and healthy living. Previous experience, though not expert level, is recommended for applicants. Program content and available resources may vary at each location.

Design & Production

Carver Center, Milford Mill & Patapsco (also offered as a Lansdowne Academy of Arts & Communications pathway as Theatre Arts)

- provides students with opportunities to engage actively in live stage production work with sound, lighting, set design and construction, costume design, and theatre/stage management. Previous experience, though not expert level, is expected for applicants. (Program content and available resources may vary at each location.)

Diesel Truck and Power Systems *† Sollers Point

- prepares students to repair diesel-powered heavy-duty equipment, automobiles, light trucks, and boats. Students will learn to diagnose malfunctions and repair engines and brakes, as well as hydraulic, electrical, electronic, steering, and power transmission systems. Students will be expected to sit for each ASE certification exam at each level of the program. Students may earn certifications in Diesel Engines, Suspension and Steering, Brakes, Electrical/Electronic Systems, and Preventive Maintenance Diesel Engines.



National Magnet Schools Month - February 2023

Finalist - Magnet Schools of America National Student

Poster Design Contest

Carmyn D., Grade 9

Milford Mill Academy

High School Programs

Digital Instrumental Music Carver Center

- prepares students for a broad range of professional activities in the music world. Students use their musicianship to enhance and complement their understanding of music theory, music literature, and music production in order to compose, perform, and produce their own music and the music of others. Students explore analog and digital technologies to apply those technologies to recording, composition, and performance as an individual musician and in ensembles.

Early College* Woodlawn

- provides students with a program that combines high school and college in a supportive, yet rigorous educational environment. Through a partnership with the Community College of Baltimore County, students will have the opportunity to simultaneously earn a high school diploma and an Associate of Arts degree or up to 60 credits toward a bachelor's degree. Students will earn credits through course work completed at both the high school campus and/or at the community college campus. College credits are tuition free.

Engineering (Project Lead the Way) *‡ Parkville & Woodlawn (also offered as a Chesapeake Academy of Science, Engineering & Mathematics pathway)

- provides students with a highly competitive college preparatory program, offering challenging courses of study at the gifted and talented level in the fields of mathematics, science, and engineering. Using Project Lead the Way's engineering curriculum, students are introduced to the scope, rigor, and discipline of engineering and engineering technology.

* Articulated college credit may be earned from the Community College of Baltimore County.

‡ Students may earn a minimum of 3 or 4 MSDE Career & Technical Education (CTE) credits for graduation, depending upon site.

□ Transcribed credit may be earned from Stevenson University, Community College of Baltimore County, and various out-of-state universities.



Engineering Careers *‡ Eastern

- provides students who are interested in the various fields of research or applied mathematics, science, computer-aided design, computer programming, and engineering with a challenging four year program of required and elective subjects geared to match their interests and to prepare them for a college or university engineering program. The programs are designed for highly motivated students and offer enriched and accelerated course work, as well as the possibility to work with professionals in the multiple fields of engineering.

Environmental Science / Studies Sparrows Point & Western (also offered as a Chesapeake Academy of Science, Engineering, and Mathematics pathway)

- offers opportunities for science-oriented and environmentally motivated students to participate in authentic situations as real environmental scientists. Students experience field study, discuss and act on environmental issues, learn about the environment from the perspectives of history, law, and public policy, and strive to understand the balance between environment, politics, economics, and culture. Students may pursue Gifted & Talented, Advanced Placement, and college articulated course work. Research and internship opportunities may also be available.

Environmental Technology *‡ Eastern & Western

- emphasizes hands-on experiences and fieldwork where students act as environmental professionals, completing projects and solving problems in environmental design, planning, monitoring, and conservation. Environmental Technology is a career field that applies the principles of math, science, technology, engineering, communications, economics, and law to ensure sustainability, as well as human health and safety. Students work with mentors to participate in and create a variety of projects such as constructing and monitoring an aquaculture system, wetland restoration, and landscaping. Students acquire a variety of computer skills used by environmental engineers, planners, and resource managers, including Geographic Information Systems (GIS). Environmental Technology offers both career oriented and articulated course work for two- and four-year colleges in environmental sciences and technology.

Graphic/Print Communications *‡ Western

- provides students with fundamental workplace, technical, and interpersonal skills necessary to enter and succeed in diverse careers associated with the graphic/print communications industry using a variety of equipment and state-of-the-art software. A partnership with Printing and Graphics Association Mid-Atlantic and the Community College of Baltimore County provides students with the opportunity to receive on-the-job training and earn national PrintED certification.

High School Programs

Health Sciences*† Overlea

- provides all students at Overlea High with an opportunity to participate in health and wellness-related lessons and activities, including units of study on Healthy Bodies, Healthy Minds, and Healthy Relationships; bi-annual community health fairs; field trips to local science/healthcare settings; optional First Aid, CPR, and Stop the Bleed training; and diverse academic experiences which include a number of Career and Technical Education pathways, such as Food and Beverage Management (ProStart), Business Management, Homeland Security and Emergency Preparedness, Information Technology: Computer Science, and Academy of Health Professions: Physical Rehabilitation and Dental Assistant. All pathways maintain a schoolwide emphasis on student wellness.

Information Technology *† Artificial Intelligence Carver Center, Sollers Point, & Western

- provides students opportunities to learn about the theory and development of computer systems that are able to perform tasks that normally require human intelligence. Students will learn coding and will explore the *5 Big Ideas of Artificial Intelligence* that include: **Perception** - Computers perceive the world using sensors; **Representation and Reasoning** - Agents maintain representations of the world, and use them for reasoning; **Learning** - Computers can learn from data; **Natural Interaction** - Intelligent agents require many kinds of knowledge to interact naturally with humans; **Societal Impact** - artificial Intelligence can impact society in both positive and negative ways. At Carver Center, AI is combined with Interactive Media Production. Students are expected to complete the requirements of both programs.



Information Technology *† Computer Science Parkville

(also offered as a Chesapeake Academy of Business & IT pathway, and as a New Town IB Career-related Programme)

- allows students to design, develop, and test software solutions and develop expertise in project management and programming languages, as well as introductory computer science.

Networking (Cyber Security) Eastern, Parkville, Sollers Point, & Western

- prepares students with fundamental and advanced computer, interpersonal, and problem-solving skills necessary for success in computer career fields. The CISCO Networking (Cyber Security) pathway provides students with a background in hardware, software, routing and switching, and cyber security. Computer-aided instruction and hands-on labs are integrated into the lessons. Students who successfully complete the program may be eligible to sit for an industry-related certification such as the CompTia Security+, CompTiaA+, or Cisco Certified Network Associate (CCNA) exam. Programs may vary by site.

Instrumental Music Milford Mill & Patapsco *(also offered as a Lansdowne Academy of Arts & Communication pathway)*

- allows students to develop their individual talents as well as skills in ensemble performance, sight-reading, and music theory. Students are also prepared for conducting and solo performances in advanced settings and are exposed to composing and recording technology. Previous experience, though not expert level, is recommended for applicants. Program content and available resources may vary at each location. Instrumental Music does not include the study of guitar or piano.



High School Programs

Interactive Media Production *† **Carver Center, Eastern, & Parkville** *(also offered as a Chesapeake Academy of Arts, Multimedia & Communications pathway; and as a New Town IB Career-related Programme)*

- provides students with experiences in Web site development, internet technology, computer graphics, digital media and entertainment production, and project management. Students develop skills in photo/video imagery, animation, non-linear video editing, Web page design, basic game development, and mobile/handheld application development. Students complete a professional portfolio which can be used to apply for advanced/continuing education programs and employment. Students may also earn industry certification in Adobe® Creative Suite® and Web design. At Carver Center, IT is combined with Interactive Media Production; students are expected to complete the requirements of both programs.



International Baccalaureate **Kenwood & New Town**

- provides a rigorous, academic program that gives students a global perspective to prepare them for college. Students in Grades 9 and 10 participate in interdisciplinary instruction across all content areas based on the International Baccalaureate Middle Years Programme framework. At Kenwood, students in Grades 11 and 12 transition into the internationally recognized IB Diploma Programme (IB DP). At New Town, students in Grades 11 and 12 select either the IB DP or the Career-related Programme (IB CP), in which they can specialize in PLTW-Biomedical Science, Nutrition and Foods Science, Computer Science, or Interactive Media Production pathways. Based on individual interest, students at both schools will select and explore a variety of courses in depth and breadth to develop individualized research and community-based action projects. Students completing the requirements may receive college credit for IB coursework.

Law & Public Policy **Eastern & Towson**

- provides opportunities for college-bound students to investigate topics and hone skills in law and public policy as they develop strong communication, writing, and presentation skills. The Gifted and Talented and Advanced Placement course work incorporates the use of technology and independent student research. Students participate in field experiences and job shadowing opportunities in law and government professions. Internships are available for seniors.

Literary Arts **Carver Center, Milford Mill, & Patapsco**

- allows students to develop originality and style in writing through serious reading, writing, thinking, observation, practice, and discipline. Throughout this four-year course of study, students pursue an enriched and sequential set of literary experiences in an atmosphere that celebrates the diversity of human perspectives, that promotes lively exchange of ideas, and that nurtures the development of each writer's voice.

High School Programs



Mechanical Construction/Plumbing Careers *†

Western

- prepares students in residential and commercial construction to install and maintain water supply systems, waste removal systems, and various fixtures and gas appliances that provide for personal comfort in the home or commercial business setting. Students who successfully complete the program are eligible for advanced placement in the Associated Builders and Contractors' (ABC) Apprentice Program. They may also be eligible for advanced placement and/or testing opportunities through other union or non-union apprenticeship programs and National Craft Assessment and Certification (NCCER).

Multimedia Communications

TV Production/Journalism

Randallstown

(also offered as a Lansdowne Academy of Arts & Communication pathway as Mass Communications; and as a Chesapeake Academy of Arts, Multimedia & Communications pathway as Journalism/Communications)

- allows students to work together to communicate information through television and radio broadcasting, video production, and journalism.

Visual Communications

Randallstown

- provides opportunities for students to design visual elements that relay a message to the viewer with a wide variety of media, including but not limited to animation, art, branding/logo design, graphic design, illustration, photography, UX design/coding, video design, and website design.

Pathways may include internship opportunities for seniors as well as opportunities to enroll in college courses.

Sports Science Academy

Kenwood & Western

- invites students to a world of leadership and career-research opportunities. The program is open to students who wish to pursue an interdisciplinary core curriculum and investigate careers in sports, health, and fitness fields, including sports medicine. Magnet concentrations include: Sports Education, Sports Business, Sports Communication, and Sports Management. Student internships are available.

Teacher Academy of Maryland *†

Eastern & Parkville

(also offered as a Lansdowne Academy of Health & Human Services pathway)

- prepares students for a variety of careers in the education profession. The program consists of four high school credits that focus on teaching as a profession, human growth and development, learning theory, and curriculum and instruction. In their senior year, students demonstrating proficiency have the opportunity to participate in internships in elementary, middle, or high school settings. Students who agree to teach in the state of Maryland may qualify for the Hope Scholarship, offered to college students by the Maryland State Department of Education.

Visual Arts

Carver Center, Milford Mill & Patapsco

(also offered as a Lansdowne Academy of Arts & Communication pathway; and as a Chesapeake Academy of Arts, Multimedia & Communications pathway as Fine Arts)

- allows students to explore their interests in media, design, and visual arts. Students develop their skills and craft through the study of art history, drawing, painting, sculpture, photography, design, media arts, or televideo. Students build a professional portfolio, which can be used to gain admission to post-secondary study or employment as a working artist.



Vocal Music

Carver Center, Milford Mill & Patapsco *(also offered as a Lansdowne Academy of Arts & Communications pathway)*

- prepares students for solo and ensemble performances in a variety of musical genres including opera and musical theatre. Course work includes vocal fundamentals and technique, sight reading, and music history, theory, and criticism. Students may also work with music technology, recording, and engineering. Previous experience, though not expert level, is recommended for applicants. Program content and available resources may vary at each location.





105 W. Chesapeake Ave.

Towson, MD 21204

(443) 809-4127

Magnet@bcps.org

www.tinyurl.com/BCPSmagnet

NON-DISCRIMINATION STATEMENT: The Board of Education of Baltimore County does not discriminate on the basis of age; color; disability; gender identity (including expression); marital status; national or ethnic origin; race; religion; sexual orientation; veteran status; or any other characteristic in its educational programs, services, or employment as provided in federal and state law.